



SR-20 Series

ROCKER SWITCH



SR-20A (Glossy Button)



SR-20N (Glossy Button)



SR-20N



SR-20N (R)



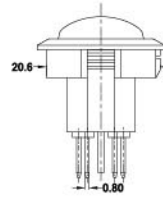
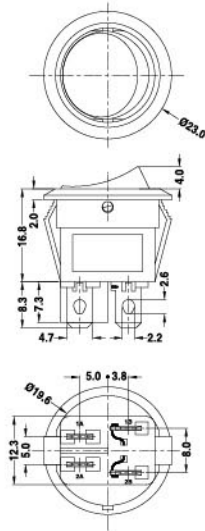
SR-06NR Cap

Specifications:

13(2)A 250VAC T85

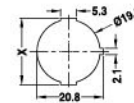


6A 250VAC T125
12A 125VAC



Suggested panel hole size

Panel thickness	X
0.75-1.25	20.3
1.25-2.0	20.8
2.0-3.0	21.1



SR-20

N 2 L Q 1 BK RE 6 0 0 4 00

Function	No. of Poles	Current	Terminal Type	Base Type	Base Color	Button Color	Button Type	Printing	Color of Printing	Lamp Voltage	Small Lens Color	Internal Use Only
A ON-OFF	1 Single	L 13(2)A 250VAC			BK Black	BK Black	2 (Matte Surface)	0 None	0 None	0 None	00 None	
N ON-OFF w/amp	2 Double	12A 125VAC			Q	1		WT White	WT White	1	1 White	
					GE Grey	GE Grey	R	2	2 Black	3 110V	GR Green	
					RE Red	RE Red		3	3 Red	4 220V	BL Blue	
					GR Green	GR Green	6 (Glossy Surface)	8	4 Blue		OR Amber	
					BL Blue	BL Blue		9	5 Yellow			
					OR Amber	OR Amber		A				
					YE Yellow	YE Yellow						