



SL-401 Series

Patent No.: 0900726.9M003 / 200930188379.3



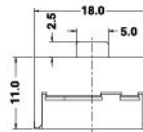
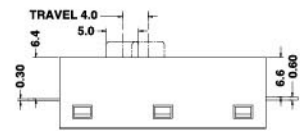
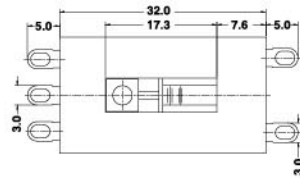
SL-401

Specifications:

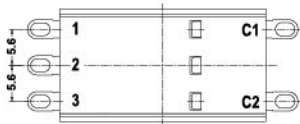
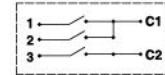
6(3)A 250VAC T85 5E4
10(3)A 250VAC T85



8A 16A 250VAC 125VAC T105



CIRCUIT DIAGRAM



SL-401

001

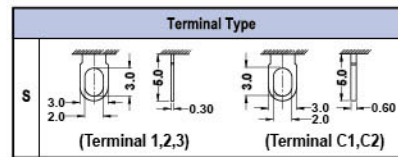
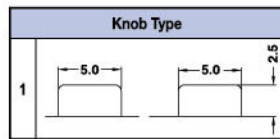
L

1

S

Circuit
001
002
003
004
005
006
007
008
009
010
More

Current
L 10(3)A 250VAC
6(3)A 250VAC 5E4
16A 125VAC



Internal Use Only

Circuit Options

CIRCUIT 001 *

POSITION	ELECTRIC CIRCUIT		
	C1-1	C1-2	C2-3
1			
2		●	●
3	●		●
4	●	●	●

CIRCUIT 002

POSITION	ELECTRIC CIRCUIT		
	C1-1	C1-2	C2-3
1			
2		●	●
3	●	●	
4	●		●

CIRCUIT 003

POSITION	ELECTRIC CIRCUIT		
	C1-1	C1-2	C2-3
1			
2	●	●	●
3	●		●
4	●		●

CIRCUIT 004

POSITION	ELECTRIC CIRCUIT		
	C1-1	C1-2	C2-3
1			
2	●	●	●
3	●		●
4		●	●

CIRCUIT 005

POSITION	ELECTRIC CIRCUIT		
	C1-1	C1-2	C2-3
1			
2	●		●
3	●	●	●
4	●	●	●

CIRCUIT 006 *

POSITION	ELECTRIC CIRCUIT		
	C1-1	C1-2	C2-3
1			
2	●		
3	●		●
4	●	●	●

CIRCUIT 007

POSITION	ELECTRIC CIRCUIT		
	C1-1	C1-2	C2-3
1			
2	●	●	
3	●		●
4	●	●	●

CIRCUIT 008 *

POSITION	ELECTRIC CIRCUIT		
	C1-1	C1-2	C2-3
1			
2		●	
3	●		
4	●	●	●

CIRCUIT 009

POSITION	ELECTRIC CIRCUIT		
	C1-1	C1-2	C2-3
1			
2	●	●	
3	●	●	●
4	●	●	●

CIRCUIT 010 *

POSITION	ELECTRIC CIRCUIT		
	C1-1	C1-2	C2-3
1			
2	●	●	●
3	●	●	
4	●	●	

*With production mould
For more circuit options, please call factory.

SLIDE SWITCH