



SL-302 Series

Patent No.: 0900726.9M001 / 200930188377.4



SL-302

Specifications:

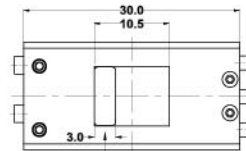
8(2)A 250VAC T85



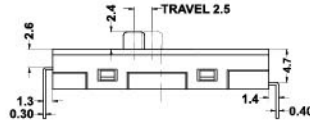
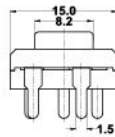
7.5A
15A

250VAC
125VAC

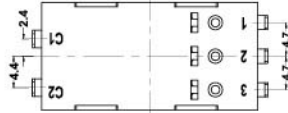
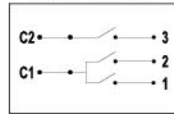
T105



Position 1



CIRCUIT DIAGRAM



SL-302

001

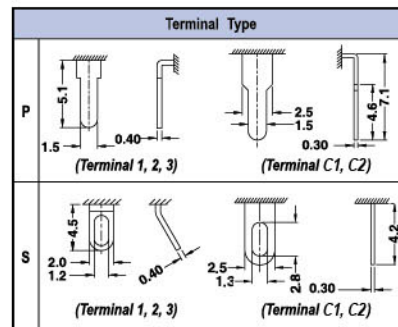
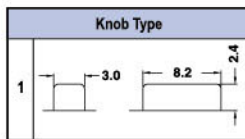
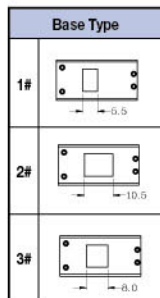
L

1

P

Circuit
001
003
101
102
103
501
502
503
505
506
More

Current
L 8(2)A 250VAC 15A 125VAC



Internal Use Only

SLIDE SWITCH

Circuit Options

* Circuit:001

POSITION	ELECTRIC CIRCUIT		
	C1-1	C1-2	C2-3
1			
2	●		●

* Circuit:003

POSITION	ELECTRIC CIRCUIT		
	C1-1	C1-2	C2-3
1			
2	●	●	●

Circuit:101

POSITION	ELECTRIC CIRCUIT	
	C1-1	C1-2
1		
2	●	
3		●

* Circuit:102

POSITION	ELECTRIC CIRCUIT		
	C1-1	C1-2	C2-3
1			
2	●	●	●
3	●	●	●

* Circuit:103

POSITION	ELECTRIC CIRCUIT	
	C1-1	C2-3
1		
2	●	
3		●

Circuit:501

POSITION	ELECTRIC CIRCUIT		
	C1-1	C1-2	C2-3
1			
2	●		
3		●	
4			●

* Circuit:502

POSITION	ELECTRIC CIRCUIT		
	C1-1	C1-2	C2-3
1			
2	●		
3		●	
4			●

* Circuit:503

POSITION	ELECTRIC CIRCUIT	
	C1-2	C2-3
1		
2	●	
3		●
4	●	●

Circuit:505

POSITION	ELECTRIC CIRCUIT		
	C1-1	C1-2	C2-3
1			
2	●		
3		●	
4	●		

* Circuit:506

POSITION	ELECTRIC CIRCUIT		
	C1-1	C1-2	C2-3
1			
2	●		
3	●	●	
4	●	●	●

* Circuit:512

POSITION	ELECTRIC CIRCUIT		
	C1-1	C1-2	C2-3
1			●
2	●		
3	●	●	
4	●		

*With production mould
For more circuit options, please call factory.