



SB-80 Series



SB-80V



SB-80D

Specifications:

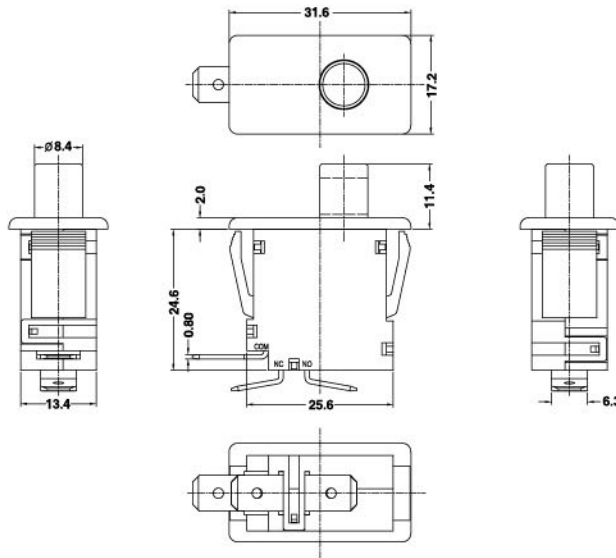
6(3)A 250VAC 40T85 5E4
10(4)A 250VAC 40T85



10A
16A
1/3HP

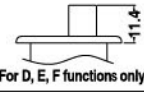
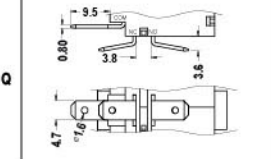
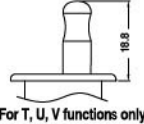
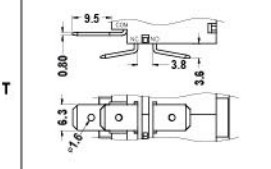
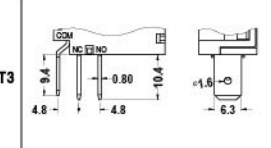
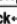

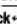
250VAC
125VAC
125/250VAC

T105
T105



PUSH SWITCH

SB-80

F	L	1	WT	WT	T	Internal Use Only
Function	Current	Knob Type	Housing Color	Knob Color	Terminal Type	
D (ON)-OFF	L 10(4)A 250VAC	1  (For D, E, F functions only)	WT White	WT White	Q 	
E ON-(OFF)	6(3)A 250VAC 5E4	4  (For T, U, V functions only)	WT White	WT White	T 	
F ON-(ON)	16A 125VAC				T3 	
T OFF-(ON) _{nc} -ON _{no} W/Pull up lock 	1/3HP 125/250VAC					
U ON _{nc} -(OFF)-OFF W/Pull up lock 						
V ON _{nc} -(ON) _{nc} -ON _{no} W/Pull up lock 						

Note:
NO: Normally open
NC: Normally close