



SB-60 Series



SB-60N



SB-60A



SB-60N w/Bezel



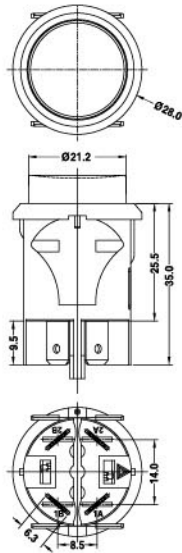
SB-60 Cap

Specifications:

8(8)A 250VAC T105/55 5E4
16(8)A 250VAC T105/55

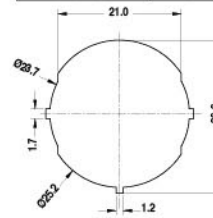


16A 250VAC T105
16A 125VAC T105
1HP 250VAC T105
1/2HP 125VAC T105

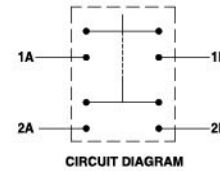


Suggested panel hole size

Panel thickness	X
0.70-3.50	3.5
0.70-4.50	4.5



Best performance for Panel thickness at 3.0-3.5mm for 3.5mm; 4.0-4.5mm for 4.5mm.



SB-60

A — 2 — H — 1 — BK — BK — 1 — 0 — 0 — T — 0

Function	No. of Poles	Current	Base Type	Base Color	Knob Color	Knob Type	Printing	Color of Printing	Terminal Type	Lamp Voltage	Internal Use Only
A ON-OFF w/lock	1 Single	H 16(8)A 250VAC	1	BK Black	BK Black	1	0 None	0 None		0 None	<p>Internal Use Only</p>
D (ON)-OFF	2 Double	8(8)A 250VAC 5E4	2	BK Black WT White GE Grey RE Red GR Green BL Blue OR Amber YE Yellow	1 2 3 4 5	1	1 White	1 12V			
N ON-OFF w/lamp		16A 125VAC	3 4 5			2	2 Black	2 24V			
		1HP 250VAC				3	3 Red	3 110V			
		1/2HP 125VAC				4	4 Blue	4 220V			
								5	5 Yellow		

PUSH SWITCH