



SB-53 Series

Patent No.: 0900726.9M004 / 200930188396.7



SB-53A



SB-53N



SB-53N



SB-53N



SB-53N(2)



SB-53N(3)

Specifications:

8(8)A 250VAC T85/55 5E4
 8(8)A 250VAC T125/55
 16(6)A 250VAC T105/55

IP65 waterproof protection for button type no.2 (SGS approved)

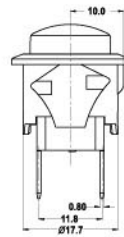
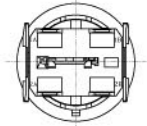
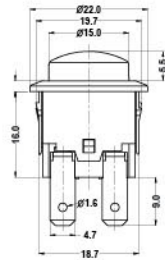
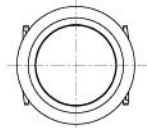


8(8)A 250VAC T85/55 5E4
 16(6)A 250VAC T105/55
 16(6)A 125VAC T105/55
 1/2 HP 250VAC T105/55
 1/4 HP 125VAC T105/55



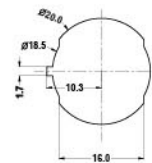
*UL61058 approved

PUSH SWITCH



Suggested panel hole size

Panel thickness
2.0
3.0



CIRCUIT DIAGRAM



SB-53

A — 2 — L — 1 — BK — BK — 1 — 0 — 0 — Q — 0 —

Function	No. of Poles	Current	Base Type	Base Color	Knob Color	Knob Type	Printing	Color of Printing	Terminal Type	Lamp Voltage	Internal Use Only	
A ON-OFF w/lock	1 Single	L 16(6)A 125/250VAC 8(8)A 250VAC 5E4 8(8)A 250VAC 1/2HP 250VAC 1/4HP 125VAC	 1 2 (For waterproof knob 2 only)	BK Black	BK Black	 1 2 (For waterproof function only)	0 None	0 None	 Q 	0 None		
D (ON-OFF	2 Double			WT White	WT White		1	1		1 White		1 12V
N ON-OFF w/lamp				GE Grey	GE Grey					2 Black		2 24V
R (ON-OFF w/lamp				RE Red	RE Red					3 Red		3 110V
				GR Green	GR Green					4 Blue		4 220V
				BL Blue	BL Blue					5 Yellow		
				OR Amber	OR Amber							
				YE Yellow	YE Yellow							